

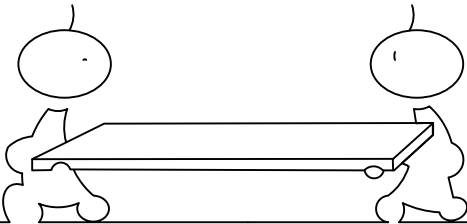
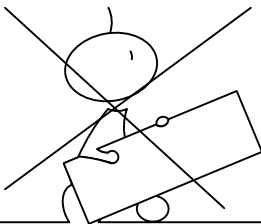
Montage-instructies Boxspring Verstelbaar

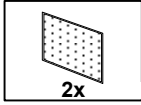
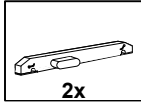
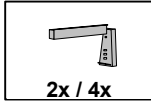
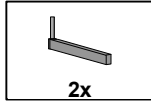
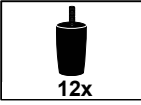
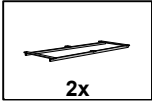
Montageanleitung Boxspring Verstellbar

Installation instructions boxspring Adjustable



NR 13

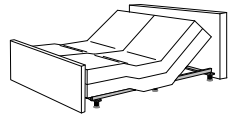




A, B + E, F, G



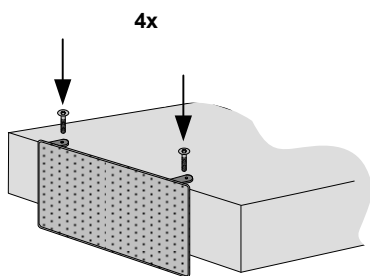
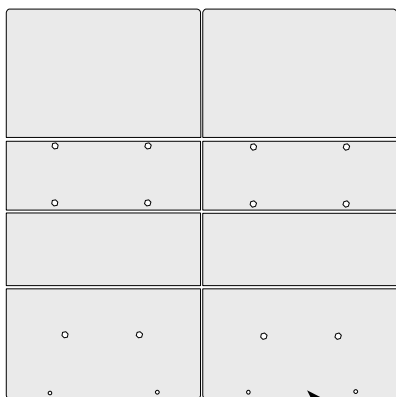
A, B, C + E, F, G, H



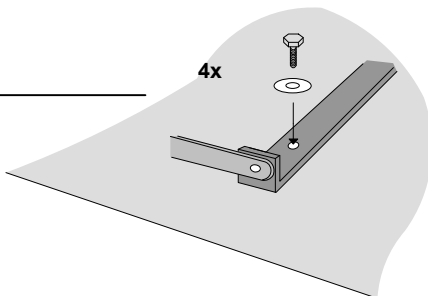
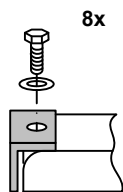
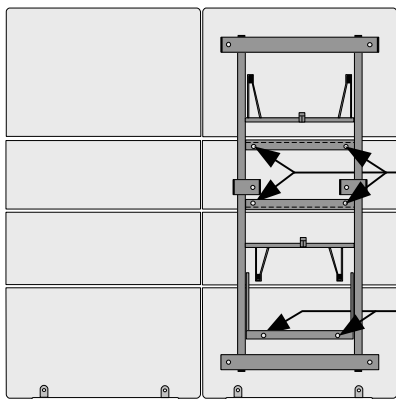
B, C, D, E, F, G, H, I

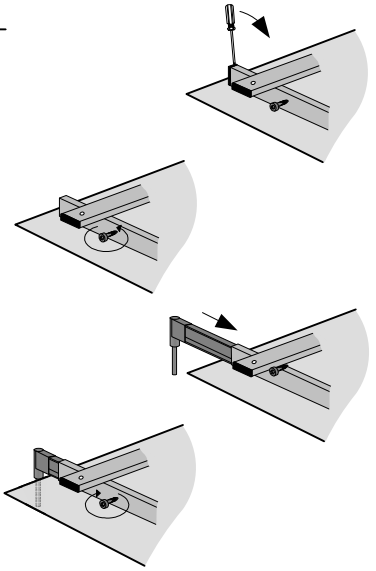
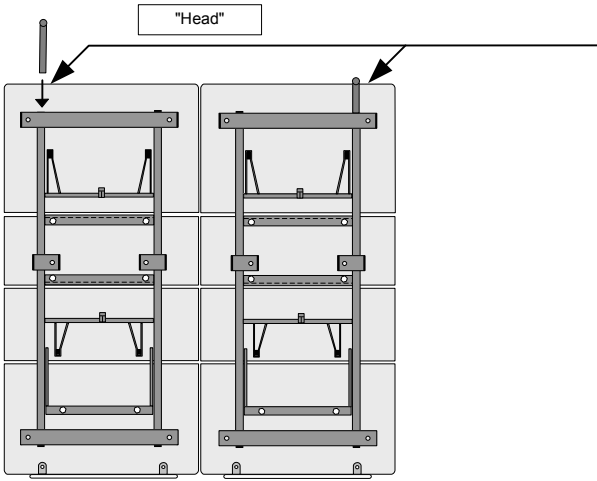
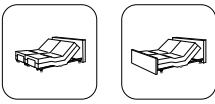
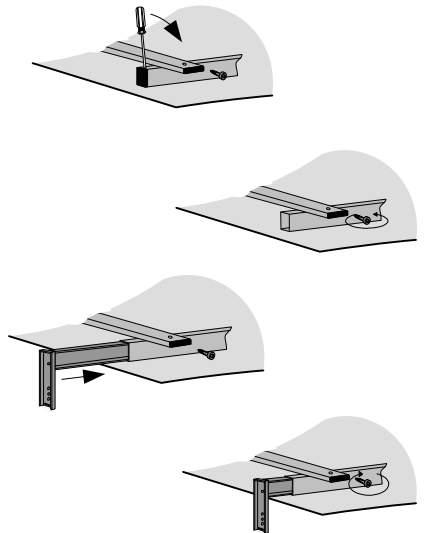
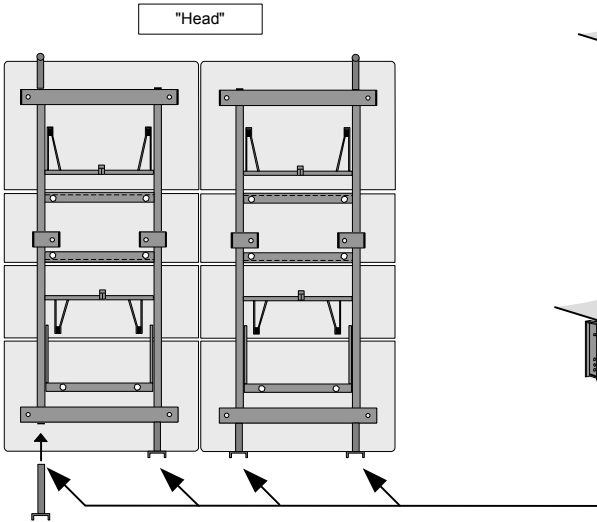
A

"Head"

**B**

"Head"

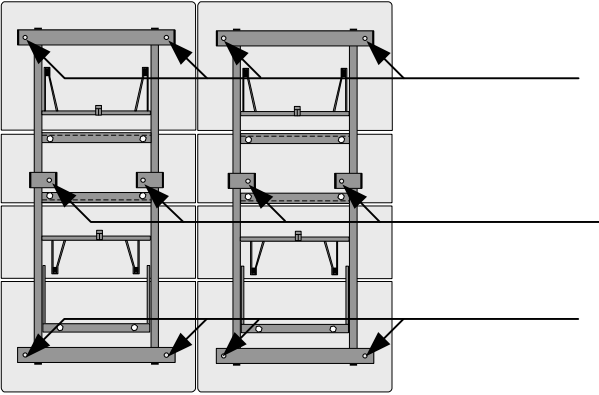


C**D**

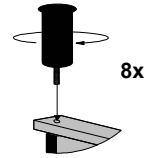
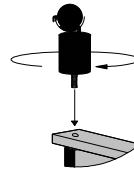
E



"Head"



4x

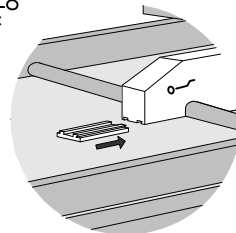
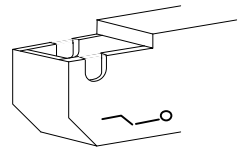
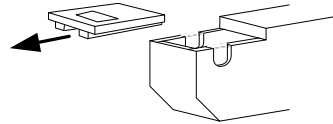
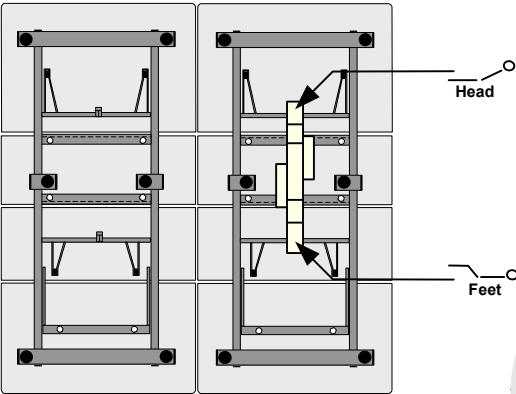


8x

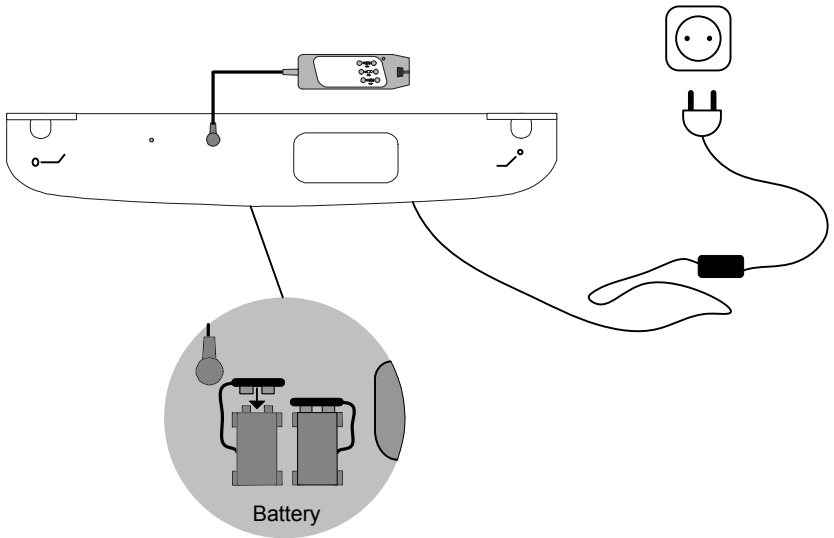
F



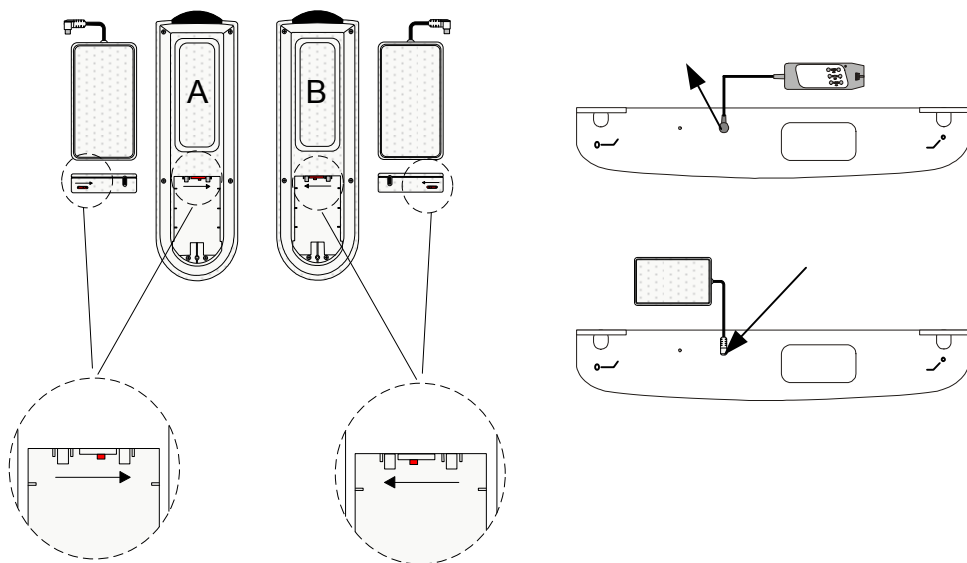
"Head"



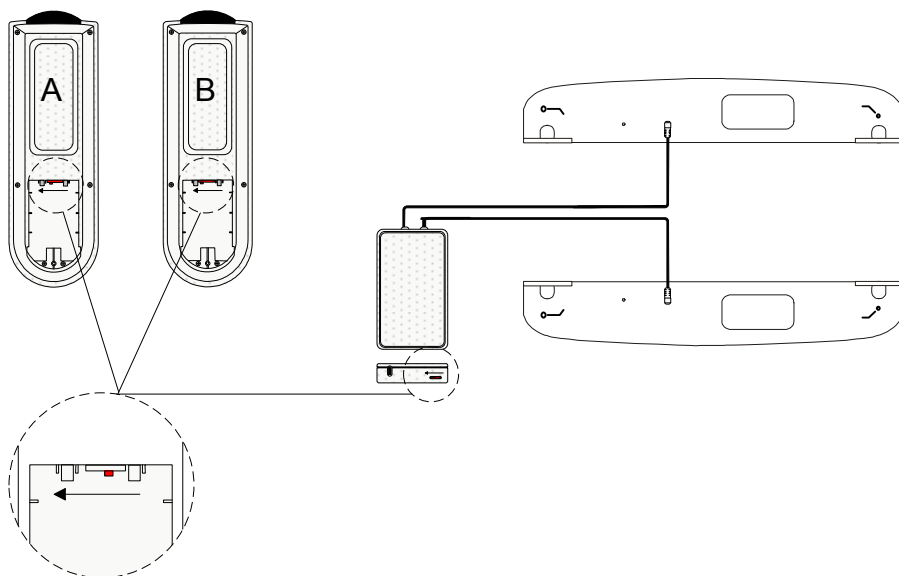
G



L.1 *Infrared*

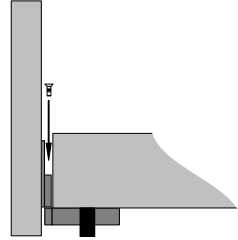
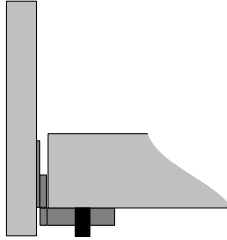
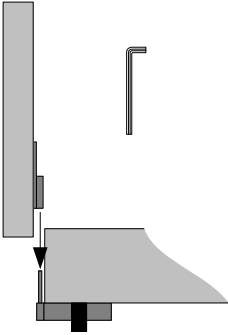


L.2 *synchronized*



For more information about the infrared remotecontrols visit
www.eastborn.nl/instructions

H



I

